

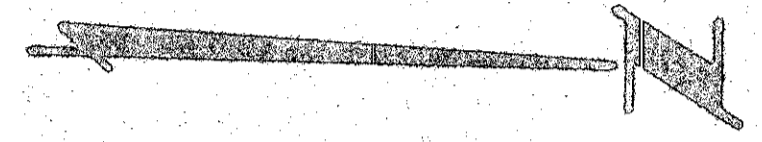
43/115

43
115

PLAT FIVE FRENCHMEN'S LANDING

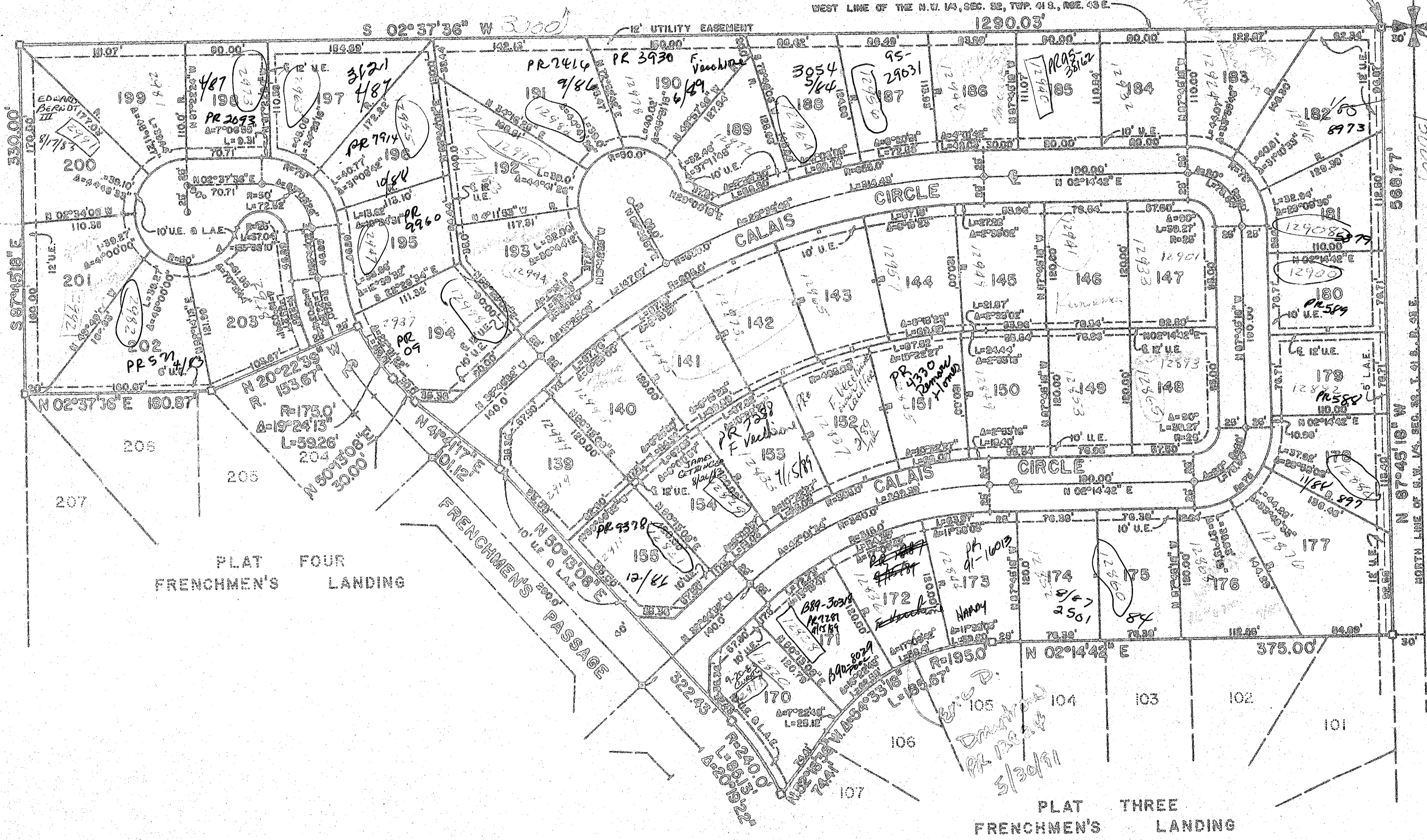
NOT PLATTED

P.O.B.



NOT
PLATTED

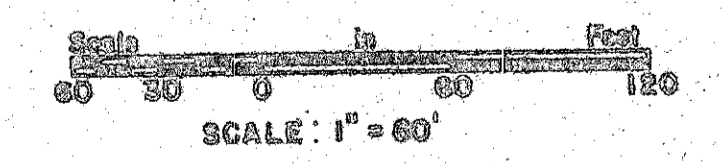
NOT
PLATTED



NOTES:

- There shall be no buildings or structures placed on public utility and buffer easements.
- bearings shown refer to an assumed bearing of South 02°57'30" West along the West line of the Northwest quarter of Section 22, Township 41 South, Range 43 East, Palm Beach County, Florida.
- ⊙ = Donato Permanent Control Point (D.C.P.)
- ⊙ = Donato Permanent Reference Monument (P.R.M.)
- R = Donato Radial Line
- U.E. = Donato Utility Easement
- L.A.E. = Donato Limited Access Easement
- When Utility and Drainage Easements intersect the Drainage Easement shall take precedence.
- There shall be no buildings or any kind of construction or trees or shrubs placed on Drainage Easements.

This Instrument Prepared By:
 Craig L. Wallace
 William G. Wallace Inc.
 Consulting Engineers and Land Surveyors
 321 Northlake Boulevard
 North Palm Beach, Florida 33409



PLAT FOUR
FRENCHMEN'S
LANDING

PLAT THREE
FRENCHMEN'S
LANDING
P.B. 42 P.G. 150 - 151

PLAT FIVE	
FRENCHMEN'S LANDING	
WILLIAM G. WALLACE, INC. CONSULTING ENGINEERS, LAND PLANNERS & SURVEYORS 321 NORTHLAKE BLVD. MC PALM BEACH FL 33409 2041 SW MARCO RD PALM CITY FLA 32909	
FIELD	1-0615 C
DATE	APRIL, 61
BY	F. MCE.
CHECKED	CLW
DATE	APRIL, 61
SHEET	2 OF 2